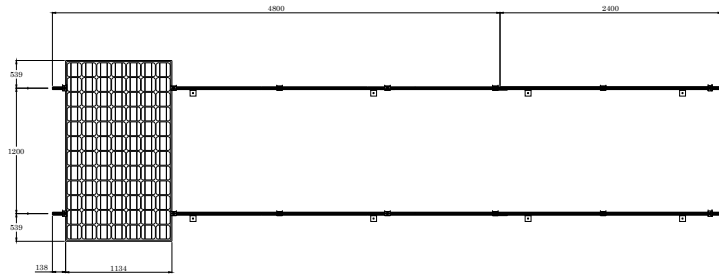
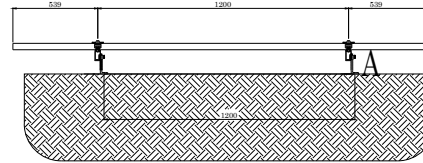


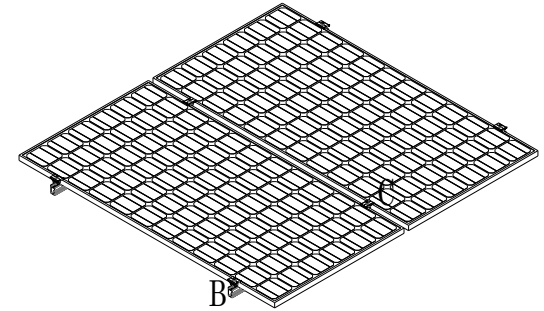
## SISTEMA DE MONTAJE DE 6 PANELES A 0° PARA PANELES DE HASTA 1135MM DE ANCHO



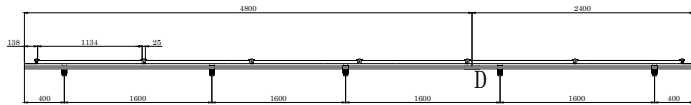
VISTA PLANTA



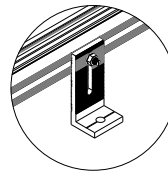
VISTA LATERAL



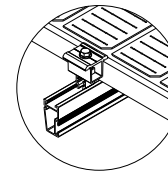
VISTA ISOMÉTRICA



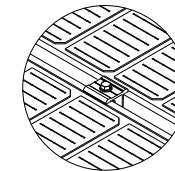
VISTA FRONTAL



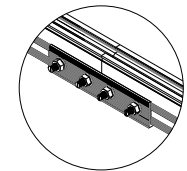
DETALLE A  
Soporte Tipo L



DETALLE B  
Abrazadera  
Universal  
(Modo Remate)



DETALLE C  
Abrazadera  
Universal  
(Modo Intermedio)

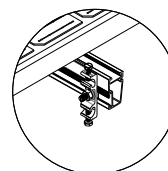


DETALLE D  
Empalme de Riel

NOTA: 1 NXT-RX-4800-MILL se corta a la mitad

NOTA: Resiste vientos de hasta 246 km/h

# Parte	Descripción	Cantidad
NXT-RX-4200-MILL	Perfil NextRail 4.2m, mill finish, Aluminio 6105-T6	0
NXT-RX-4800-MILL	Perfil NextRail 4.8m, mill finish, Aluminio 6105-T6	3
NXT-SL-2	2 Soporte L de 105mm para Next-Rail	5
NXT-ER-2	2 Empalmes de riel con puesta a tierra, para Next-Rail	1
NXT-AUA-30/46-2	2 Abrazadera universal p/panel con marco de 30-46mm	7
NXT-GC-1	1 Terminal de conexión a tierra para Next-Rail	1
NXT-CLIP-5	5 Clips de plástico para dos cables, Next-Rail	3



Terminal de  
Conexión a Tierra

observaciones				A3
MATERIAL:				
FECHA	29/05/2023			
ACOT.	mm [in]			
PESO:		ESCALA NA	HOJA 1 DE 1	